

HYMER Exsis-i.  
Travelling in style can be this slender.

# The new light-weight design



[www.exsis.hymer.com](http://www.exsis.hymer.com)



better design, better workmanship



Compact and slim.



Extremely manoeuvrable.



Extra lightweight – for maximum payload.

# It's so easy: HYMER





Completely winterproof.



High-quality design and equipment.

Discover the new lightweight models!

# Exsis-i



—

**Plenty of flexibility and comfort – that's all part and parcel of mobile holidays.**  
The new generation of the HYMER Exsis-i combines both with a certain elegance.

—

**Slim, compact exterior dimensions**  
it is only 2.77 metres high and 2.22 metres wide – but the standing height inside the vehicle is still a comfortable 1.98 metres giving a spacious, comfortable layout

—

**Excellent handling and very manoeuvrable**  
thanks to the slim body, the AL-KO chassis with its lightweight frame, optimised wheelbase and perfectly engineered weight distribution

—

**Curb weight way below 3.0 tonnes**  
for carefree loading and travelling, even with a full load (4 persons)

—

**Winterproof body**  
with full foam PUAL walls, foamed GRP floor and heat-insulated heated utilities area for lines, fresh water and waste water tanks

—

**Excellent value for money**  
thanks to a comprehensive high-quality standard equipment and first-class workmanship

—

A brilliant example 



The new Exsis-i is exceptionally comfortable with energy saving interior lighting using only modern LED technology.



**A** The lounge seating group in the new Exsis-i offers high-class comfort for up to five people.

**B** Plenty of room for movement in the living area with the high-quality padded folding seat.

**C** Swivel pilot seats with ultra wide armrests, in matching fabric to the living area.

# Living in style



Slim on the outside, generous and comfortable on the inside – the new HYMER Exsis-i turns the apparently impossible into reality. The spacious lounge seating group offers comfort for up to five people. The padded seat on the entrance side folds away to provide plenty of space to move around. The large movable table is surrounded by the swivel pilot seats in the driver's cab and the two-seater bench seat with two integrated 3-point safety belts.

The exclusive living ambience in the Exsis-i is due to much more than just a question of size. The high-quality upholstery and the attractive select fabric designs are as much part of the exclusive Marasca

Select furniture style as the matching stylish curtains and the quality details, such as the overhead storage cupboards in high-class wood look. Even the insect screen at the entrance and the high-quality darkening curtain in the driver's cab are included in the standard equipment. The list of optional extras comprises power roller blinds on the front window.

The large double glazed panorama roof vent fans with LED lights and insulated frame window flood the living area with light. Together with the central warm air heating system, they create a cosy draught-free room atmosphere, even in winter.



**D** The large surface central table in the lounge seating group is movable lengthways or sideways.

**E** The open interior of the new Exis-i is bright and spacious with large windows and energy-saving LED lights throughout.

The details highlight its true greatness



**A** After it is lowered, the bed rests firmly on supports and is easy to access the 1.50 metre wide lift bed with its large sleeping area and plentiful headroom.

**B** Choose which end of the bed you want to sleep at with lights at both ends of the beds.

# Sleep in comfort

The focus here is on supporting the spine. All four berths on the new Exsis-i are equipped with anatomically strengthened 7-zone cold foam mattresses with special breathable mattress covers.

Maximum freedom of movement is promised by the Exsis-i 698, but not only in the 1.40 metre wide queen-size bed at the rear. The 80 centimetre wide single beds in the Exsis-i 578 and 674 can be made even wider at the top by additional cushions supplied as standard. Two more people can sleep comfortably in the lift bed above the driver's cab. The 1.50 metre wide sleeping area can be lowered, whether manually or electrically,

onto firm supports on either side. Perfect for easy access and giving plenty of headroom!

Around the berths there is plenty of storage for comfort. Thanks to numerous stowage facilities and the lighting at both ends, your glasses, books and drinks are always at hand with all beds. Fresh air for a restful sleep comes from the pop-out windows on both sides and the roof vents at the rear. Darkening and insect screen blinds are integrated and flush to the roof vents to give plenty of headroom in the sleeping area.



**B**



**A**



**D**



**C** The roof vent fans, with integrated blinds, are flush-mounted to give more headroom at the rear.

**D** The single beds at the rear, with fixed steps, are generous and comfortable with high-quality bamboo print viscose bedspreads and an additional cushion to enlarge the sleeping area.

Exceptional sleeping quality and plenty of space on board



**A** Comfortable worktop height above the standard 105 litre fridge.

**B** The high-quality worktop can be extended as required.

**C** Store everything just like at home with the 90 centimetre wide drawers giving flexible arrangement space.

# Enjoy plenty of room

The Exsis-i is also truly convincing in the kitchen with its distinct upgrade in comfort thanks to optimal space utilisation. Besides the 3-hob cooker and the large sink next to it, the kitchen unit offers (optional) space for a room-high fridge (150 litres) with separate freezer compartment or for a TEC Tower with fridge-freezer combination and oven. The glass cover above the cooker and sink is split in the middle and acts as an additional flexible worktop. As required, the kitchen worktop can also be extended with a

simple movement. Experience it yourself. Serving and preparing dishes turns into sheer enjoyment!

Everything you need can be stowed in the spacious kitchen cupboards. Food for the trip - all that goes into the deep overhead storage cupboards above the sink. Crockery, kitchen equipment and other food fit into the many large drawers in the base units. The drawers can be partitioned so that you have optimum storage for everything.


The very bright LED spots over the worktop and the large kitchen window, which is protected by a blind and can also be darkened, provide perfect light when working in the kitchen.



**D** Comfortable working – the wide kitchen unit on the Exis-i is designed with extra large stowage space, a large radius for movement and fast access to all kitchen equipment.

# to move about

Broaden your talents in the kitchen



exclusive

Optional:  
with  
TEC Tower

**A** Turn the wall around and an open bathroom transforms into a room-high shower in the Vario-Premium bathroom on the Exsis-i 578 and 674.

**B** The exclusive comfort bathroom in the Exsis-i 698 is compact on the outside yet spacious on the inside.

# Ideas for freshening

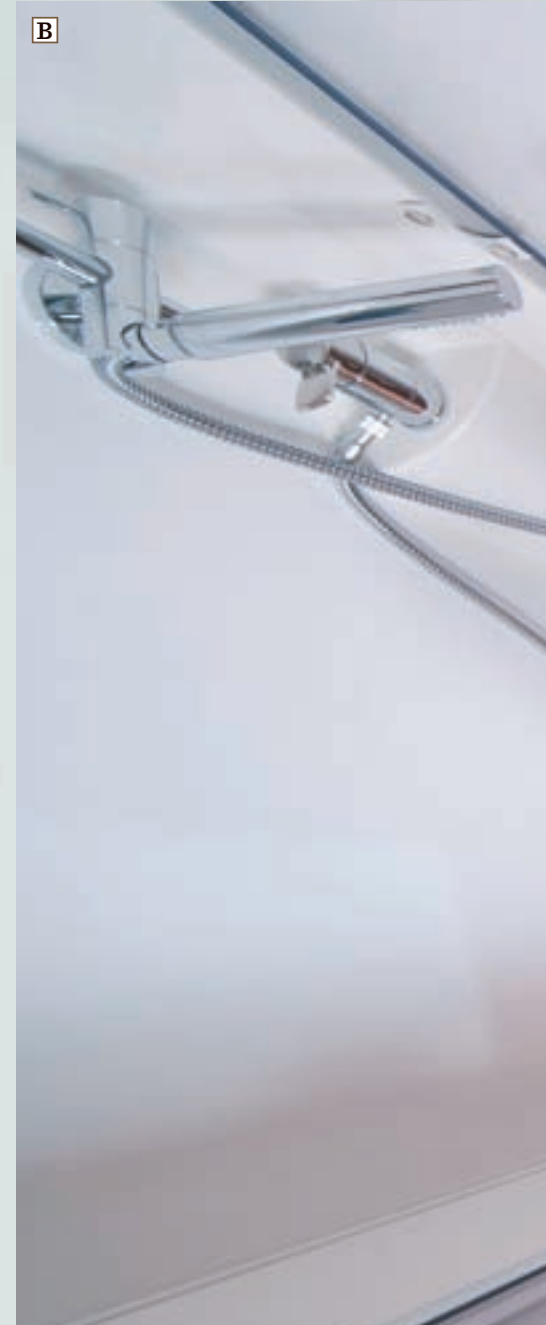
Big in comfort, compact in body – this guiding principle is best expressed in the creative bathroom design on the Exsis-i. Depending on the layout it is implemented in one of two carefully conceived variations.

On the Exsis-i 578 and 674, the swivel wall in the Vario Premium bathroom transforms the bathroom into a spacious waterproof shower cubicle. This elegant solution therefore uses the available space in two ways. The separate shower cubicle in the

large comfort bathroom on the Exsis-i 698 offers even more freedom of movement. The extra-deep washbasin and the bathroom cabinet in matching furniture finish create an exceptionally homely and relaxed bathroom ambience.

In all bathrooms the shower tray is equipped with two drains. The large frosted glass roof vent fan with integrated darkening blind and insect screen ensures rapid humidity extraction and provides a pleasant standing height. The high-quality bench

toilet on the Exsis-i is comfortable and particularly easy to clean. The folding shelf in the Vario Premium bathroom also forms a perfect supplement to the many shelves and compartments around the washbasin. Everything has its place here.

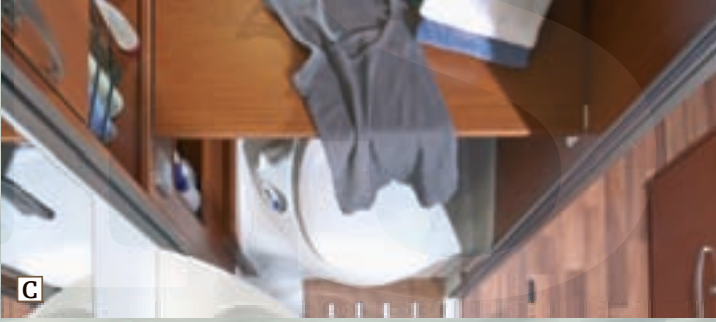


C Practical and comfortable –  
the wide easy-to-clean bench toilet with shelf.

up



Well-conceived bathroom solutions for relaxing and feeling good





# Keeping warm syste

A relaxed holiday also means keeping the on-board temperature at a pleasant level. Regardless of the weather, climate or season, the Exsis-i has an elegant solution for this.

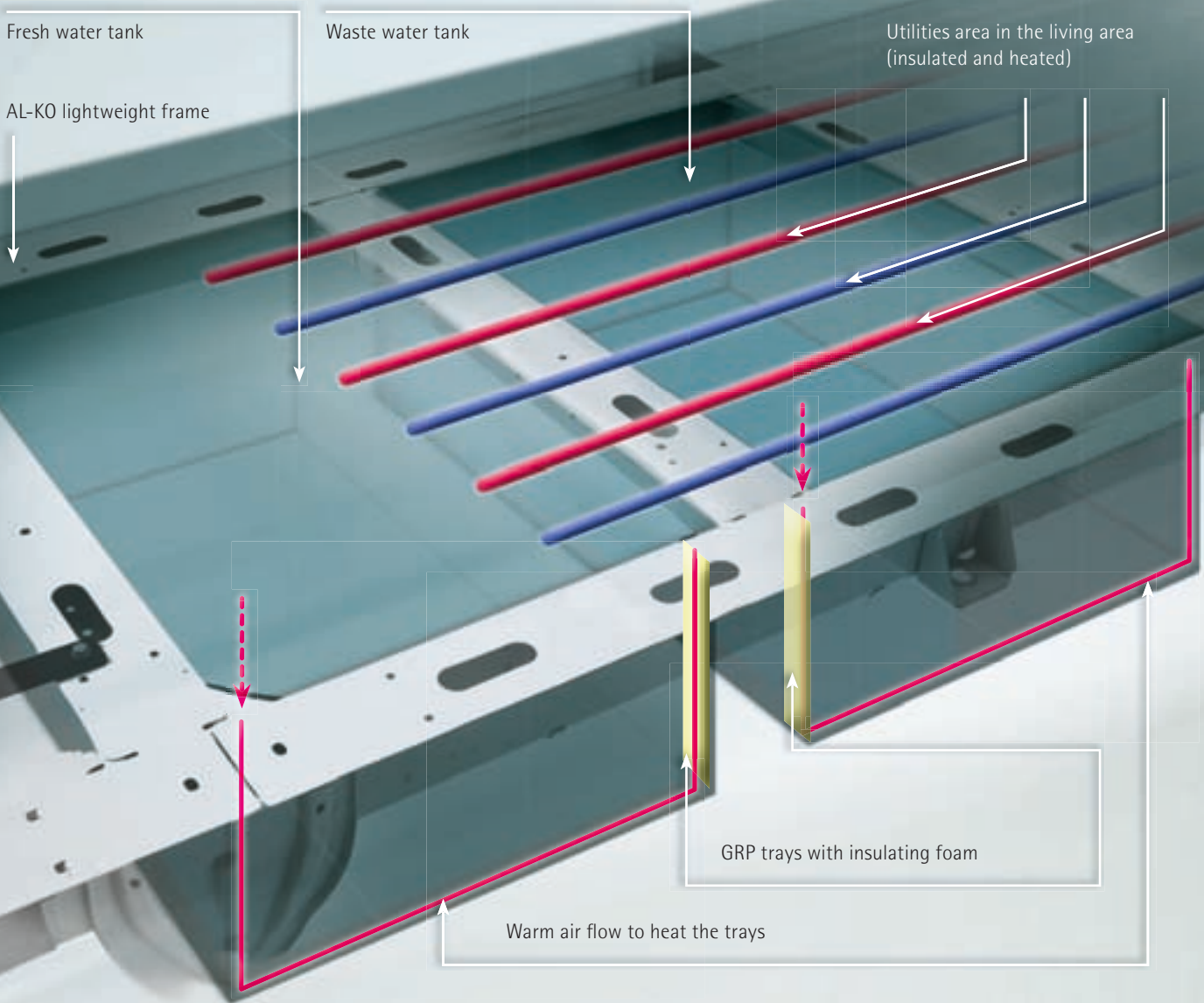
The full foam HYMER PUAL wall construction, the GRP floor which is also foam-padded and the high-quality frame windows provide the vehicles with complete thermal insulation both

in summer and in winter. This exemplary body technology makes the Exsis-i the leading all-year-round vehicle in its class.

The central warm air heating system not only provides the interior with cosy heat. It also protects the utilities from frost in the heated living area. The fresh and waste water tanks are housed in a large, insulated GRP tray un-

der the living area and warm air flows around them, the luggage in the garage and all the other outside stowage compartments. Based on numerous tests under real temperature conditions, the heat distribution within the vehicle is optimised to the smallest detail. As a result, you enjoy a constant interior climate in your Exsis-i and avoid any unnecessary energy losses at the same time.

**Perfect thermal insulation from below:  
The foamed GRP floor with insulated safety trays**





Excellent heat distribution.



Dual glazed frame window.

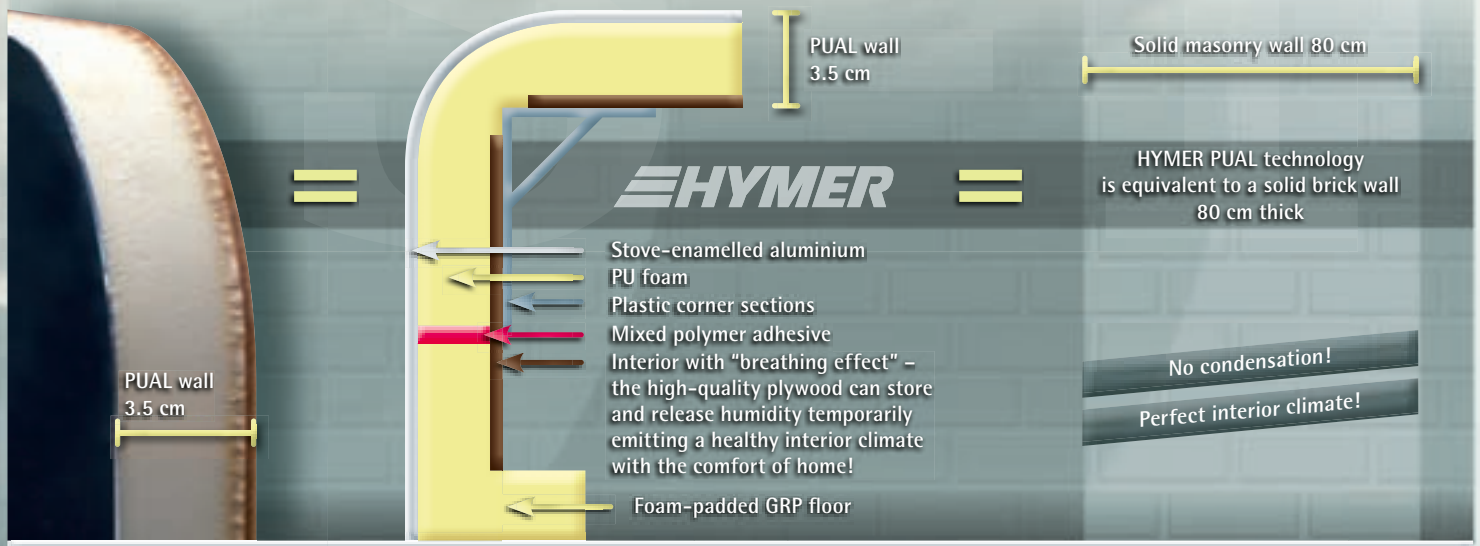


Insulated stowage compartment hatches and doors.

# atically

Groundbreaking body and heating technology

Perfect thermal insulation: solid foam HYMER PUAL wall construction with continuous elastic cementing



Modern body technology and first-class workmanship make the Exsis-i a totally reliable travel companion in all seasons.

**Perfect thermal insulation** with the full foam HYMER PUAL wall construction and the foam-padded GRP floor

**No cold thermal bridges** thanks to continuous HYMER PUAL insulation on all stowage compartment hatches and doors

**Insulation glazing on all windows**

thanks to thermally insulated S7 windows with powder-coated aluminium frame insulation glazing on all windows

**No doors or stowage compartment hatches can freeze up** thanks to high-quality splashwater seals on all hatches and doors

Excellent heat distribution throughout the vehicle



- Dashboard
- Driver and front passenger seats (footwell)
- Lounge seating group and platform
- Entrance door area

- Kitchen
- Bathroom / toilet
- Rear bed area
- Fresh water and waste water tanks in GRP tray



**Optimal thermal output**

thanks to the Truma heating system (6 KW) positioned centrally in the vehicle

**Pleasant indoor climate in the living area**

thanks to the heated platform under the seating group, warm air vents in the driver's cab and on the dashboard

**Practice-proven heat distribution**

throughout the entire vehicle, through to the heated outside stowage compartments

**Protected housing of utilities**

for all lines and utilities in the heated living area

**Frost-proof location for the water tank**

in foamed and heated GRP trays

**A** Always in sight: the electrically adjustable and heated exterior mirrors.

**B** Practical: the outside hatch to the stowage compartment under the lounge seating group.

# Everything you've ev



**Compact shape but fully equipped: the new HYMER Exsis-i offers you a multitude of luxury features, fitted as standard, giving comfort and safety in all the important areas.**

#### Vehicle engineering / Chassis

- Fiat diesel engine 95.5 KW / 130 hp with 6-speed gearbox
- Euro 5 exhaust gas emission standard
- High-quality Carrara white body colour with design stickers
- Electrically adjustable and heated exterior mirror with wide angle mirror
- Mudflaps on front and rear wheels
- Daytime running lights

#### Body / Windows / Doors

- Full foam PUAL wall construction
- GRP floor
- Entrance door with electric entrance step
- Insect screen on entrance door
- Awning lamp with rain guard
- High-quality frame windows

#### Heating / On-board equipment

- Central 6 KW warm air heater
- Heated platform under seating group
- Driver's cab and dashboard heating
- 4 x 230 V power sockets (2 x kitchen, 1 x bathroom, 1 x seating group)
- Living area battery AGM 90 Ah
- Complete LED lighting

#### Stowage space

- Stowage compartment under lounge seating group with exterior hatch
- Large garage with gas strut doors on either side (Exsis-i 578, 674)
- Bed box wardrobes at rear
- Room-height wardrobe (Exsis-i 674)
- High payload capacity thanks to low curb weight





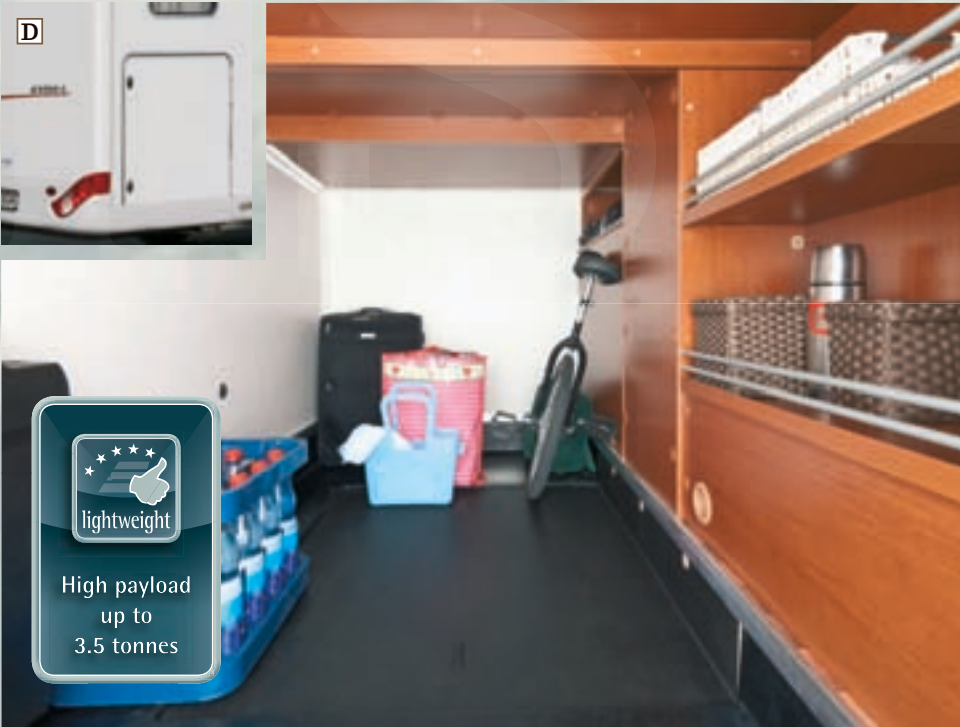
**C** All round safety: the entrance door with its insect screen and electric entrance step.

**D** Gas struts: the large doors on either side of the enormous garage.

**E** Light by day and by night: the large roof vent fans with integrated LED lighting.

# er dreamt of

The standard equipment on the Exis-i leaves no wish unfulfilled



#### Living area

Lounge seating group with comfort upholstery and two integrated 3-point safety belts • Large table, movable lengthways and sideways • Opaque darkening curtains in the driver's cab • Panorama roof vent fan (80 x 50 cm) with dual glazing and LED lighting • Radio and TV preparation with loudspeakers, DVD and audio cabling and radio aerial

—

#### Sleeping area

Lift bed with 1.50 metre wide sleeping area and firm support • Lighting on both sides of lift bed for option of sleeping position • Single beds with additional cushion to widen the top of sleeping area (Exis-i 578, 674) • 7-zone cold foam mattresses with high-quality breathable cover • Clear glass-roof vent fan (40 x 40 cm) with integrated insect screen and blackening curtain • Pop-out windows at rear on the right and left with insect screen and blackening curtain

—

#### Kitchen

3-hob cooker / sink combination with glass cover • Kitchen window with integrated all-round blind • Large flexibly partitioned drawers (90 cm wide)

—

#### Bathroom / Toilet / Shower

High-quality bench toilet • Frosted glass roof vent fan with integrated insect screen and blackening curtain • Plenty of stowage space for bathroom utensils





The compact, manoeuvrable travel companion:  
Exsis-i 578 with four comfortable seats and berths – and a total length of 6.75 metres.

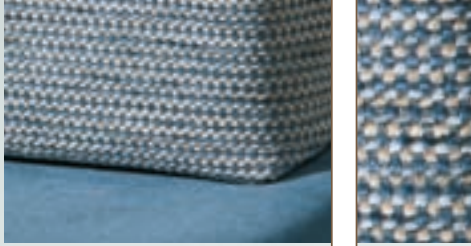
# As individual as you

The major focus on the new Exsis-i is the freedom to personalise your vehicle. Regardless whether you opt for the compact layout of the Exsis-i 578, or the extended version of the Exsis-i 674 or for the large-size Exsis-i 698, you are the one who decides on the appearance and comfort equipment on your vehicle.

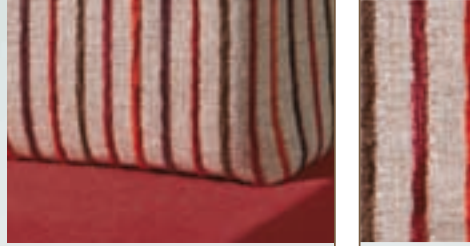
The elegant exterior made of smooth sheet aluminium sparkles in high-class Carrara white body colour. Inside there are five attractive fabric designs and three leather/textile combinations for you to choose from - so you can add a very personal touch to

your living and sleeping areas. Optionally, of course, you can upgrade your HYMER Exsis-i with individual equipment features.

Experience the generous comfort that these slim models offer for four people! In the comfortable lounge seating group, the wide lift bed and the various rear beds – there is so much space to move about in freely and cosily and you can add your very own personal touch to the furnishings and equipment. Ideal for discerning travellers. Test it for yourself – now and discover the new lightness created by HYMER.



fabric design  
"Husum" ●



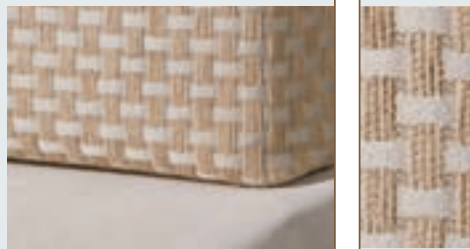
fabric design  
"Palermo" ●



fabric design  
"Salerno" ●



fabric design  
"Belfast" \* ●



fabric design  
"Santa Cruz" \* ○

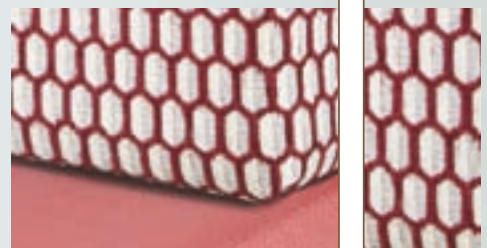
\* *Optional extra*



leather/fabric combination  
"Bolton" \* ○



leather/fabric combination  
"Trinidad" \* ○



leather/fabric combination  
"Riga" \* ○



The extended single bed variant: Exsis-i 674 with additional padded folding seat at front and large wardrobe at rear.






The generous feeling of space: Exsis-i 698 with freely accessible queen-size bed and extra large comfort bathroom.

are


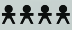


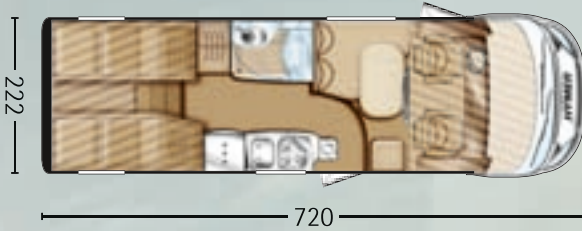
Layouts, designs and optional extras






**Exsis-i 578**  3.500 kg – 4.250 kg  



**Exsis-i 674**  3.500 kg – 4.250 kg  



**Exsis-i 698**  3.500 kg – 4.250 kg  



Give your Exsis-i a personal touch of the comfort you want! Your HYMER dealer will gladly inform you about the optional extras available. Here is a sample of the main extras:

—

**Vehicle engineering / Chassis**

- Bi-xenon headlights • Foglights
- Cornering lights
- Reversing camera • Bike rack
- Towbar and electrics

—

**Body / Windows / Doors**

- Flexible TV bracket • Electric front blinds • Driver's door with electric window and illuminated entrance • Electric entrance step to the driver's door
- GRP roof covering

—

**Heating / On-board equipment**

- Warm air underfloor heating • Two batteries with additional charger

—

**Kitchen**

- Jumbo fridge (150 litres) • TEC Tower with fridge-freezer combination, oven and grill

—

and much more

Discover Germany with the Exsis-i.



Get the latest route magazine with over 30 holiday and theme routes throughout Germany.  
Free from your HYMER dealer.

Are you already travelling with a Hymermobil? Then we would be thrilled to receive your photos and videos on our Facebook site. Just look us up!

**Note:**

This brochure describes the series status at the time of publication. Despite careful checking of the contents, printing errors are not excluded. During the course of the model year, we retain the right to make changes to equipment or product improvements. Before signing a contract of sale, please ask our authorised HYMER dealer for our current products and series status.

Some vehicles include optional extras which are quoted in the current price list and available at extra cost. The decoration shown is not supplied by HYMER. The details of scope of delivery, appearance, performance, dimensions and weights of the vehicles – deviations within the factory tolerance limits (max +/- 5%) are possible and permissible – are valid at the time of going to press. They conform to European provisions governing homologation; they may change up to the time of vehicle purchase or delivery. Your HYMER contract partner will gladly provide you with information on changes and the standard scope of delivery.

The water supply system meets the current state of the art as at 07/2011 (EC Directive 2002/72/EC).

Copyright by HYMER AG.



HYMER AKTIENGESELLSCHAFT  
Postfach 1140  
88330 Bad Waldsee

[www.exsisi.hymer.com](http://www.exsisi.hymer.com)  
[www.facebook.com/hymerAG](http://www.facebook.com/hymerAG)

